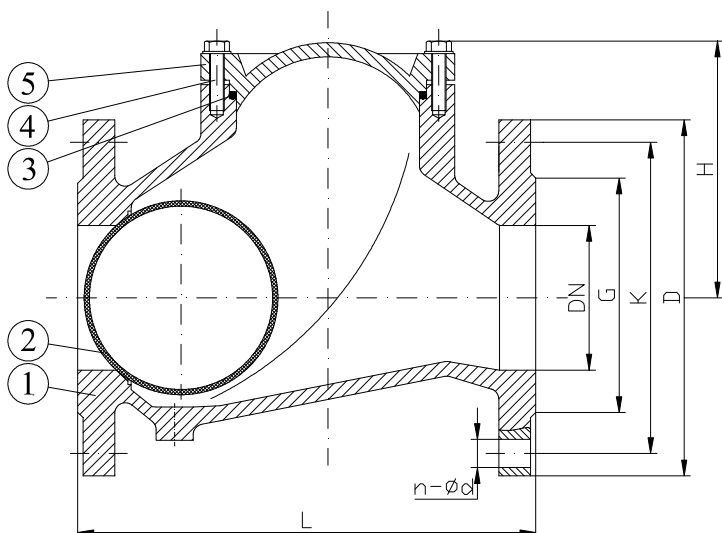


**VALVOLA DI RITEGNO A PALLA FLANGIATA PN10/16****FLANGED BALL CHECK VALVE PN10/16****APPLICAZIONE:**

Sistemi di pompaggio per acqua, liquidi viscosi, densi ed aggressivi.

**APPLICATION:**

Pumping station for clean and sewage water or viscous fluids.



<b>NORMA PROGETTO:</b>	EN 1074-3
<b>SCARTAMENTO:</b>	EN 558-1 Serie48
<b>FLANGE:</b>	EN 1092-2
<b>COLLAUDI:</b>	EN 12266
<b>TEMP. ESERCIZIO:</b>	Min -10°C /Max + 80°C
<b>PRESSIONE ESERCIZIO:</b>	Min 0,3/0,5 bar

<b>DESIGN STANDARD:</b>	EN 1074-3
<b>FACE TO FACE:</b>	EN 558-1 Serie48
<b>FLANGES:</b>	EN 1092-2
<b>TESTS:</b>	EN 12266
<b>WORKING TEMP.:</b>	Min -10°C /Max + 80°C
<b>WORKING PRESSURE:</b>	Min 0,3/0,5 bar

DENOMINAZIONE PART	MATERIALI MATERIALS
-----------------------	------------------------

<b>1</b>	<b>CORPO BODY</b>	GJS 400 GJS 400
<b>2</b>	<b>PALLA BALL</b>	ALLUMINIO+NBR (DN50-150) ACCIAIO+NBR (DN200-300) GJS400+NBR (DN350-400) POLIURETANO (DN500) ALUMINIUM+NBR (DN50-150) STEEL+NBR (DN200-300) GJS400+NBR (DN350-400) POLYURETHANE (DN500)
<b>3</b>	<b>COPERCHIO BONNET</b>	GJS 400 GJS 400
<b>4</b>	<b>VITE BOLT</b>	ACCIAIO INOX STAINLESS STEEL
<b>5</b>	<b>GUARNIZIONE GASKET</b>	NBR NBR

DN	G	K		D		n-ød		L	H	W (kg)
		PN10	PN16	PN10	PN16	PN10	PN16			
50	98	125	125	165	165	4-19	4-19	200	106	7.7
65	118	145	145	185	185	4-19	4-19	240	129	11.2
80	132	160	160	200	200	4-19	8-19	260	146	15.4
100	156	180	180	220	220	8-19	8-19	300	194	22
125	184	210	210	250	250	8-19	8-19	350	207	33
150	211	240	240	285	285	8-23	8-23	400	240	45
200	260	295	295	340	340	8-23	12-23	500	322	90
250	319	350	355	395	405	12-23	12-28	600	388	163
300	370	400	410	445	460	12-23	12-28	700	458	230
350	429	460	470	505	520	16-23	16-28	800	580	290
400	480	515	525	565	580	16-28	16-31	900	730	450
500	582	620	650	670	715	20-28	20-34	1100	900	760

**RIVESTIMENTO ESTERNO/INTERNO:** Polvere epossidica di colore blu RAL 5005 con spessore min 200µm.

**SURFACE PROTECTION:** FBE coating process with epoxy resin powder of sky blue color RAL 5005 and minimum thickness of 200µm.